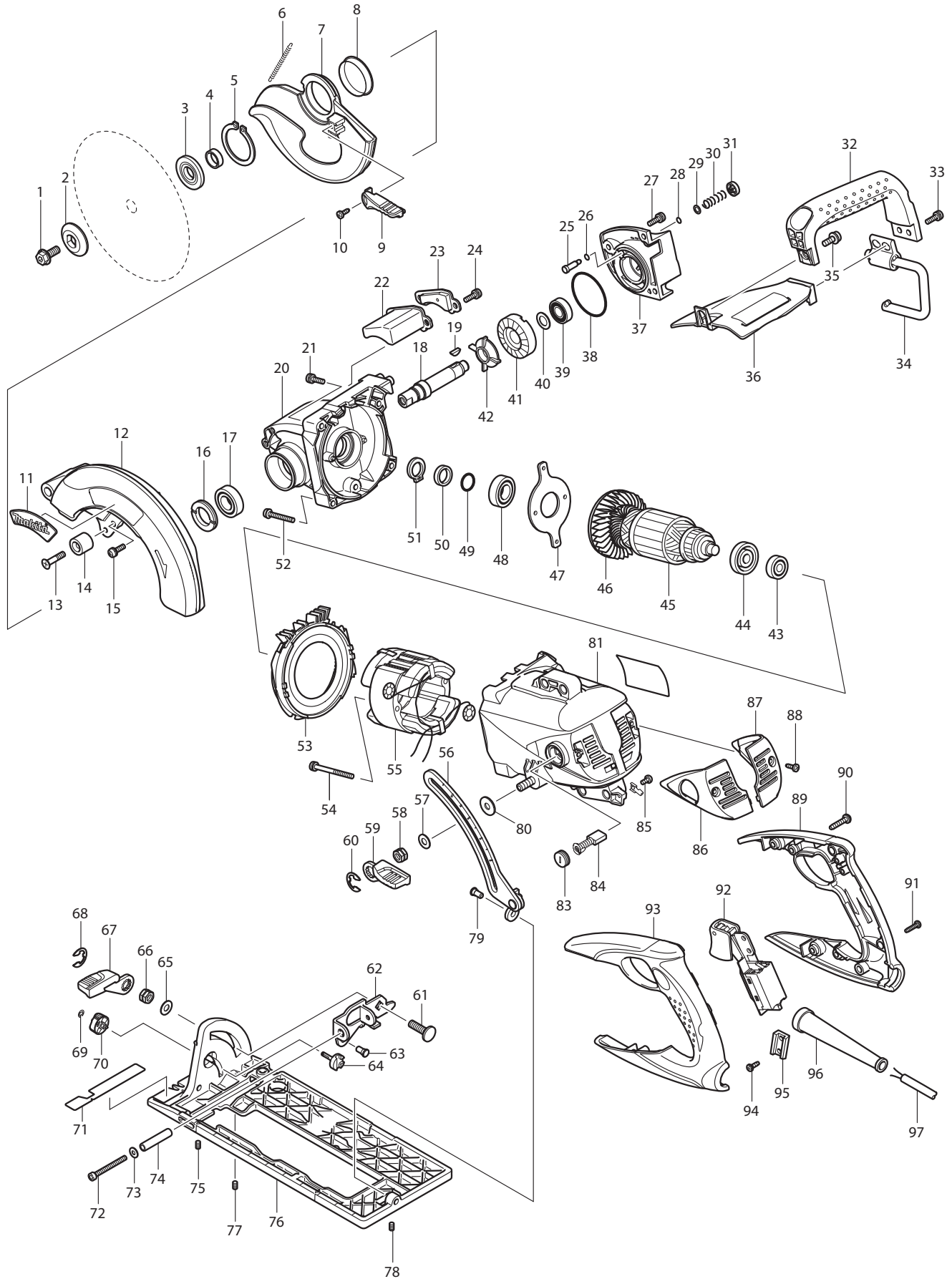




08 - 2010
5377MG
7-1/4" HYPOID SAW



PARTS LIST

Item No	Type	Part No	Description	Qty	Unit
001		266400-6	HEX. SOCKET HEX. BOLT M8X20	1	PC.
002		224275-9	OUTER FLANGE 40	1	PC.
003		224268-6	INNER FLANGE 40	1	PC.
004		257279-6	RING 17	1	PC.
005		961201-4	RETAINING RING S-42	1	PC.
006	2	231889-7	* TENSION SPRING 5	1	PC.
007	2	319365-2	SAFETY COVER	1	PC.
008	1	345422-0	SPACER	1	PC.
008	2	346880-3	SPACER	1	PC.
009		272255-9	LEVER 50	1	PC.
010		266026-4	TAPPING SCREW BIND CT 4X12	1	PC.
011		819236-8	MAKITA LOGO PLATE	1	PC.
012		188203-7	BLADE CASE SET	1	PC.
012	INC.		Item No. 11	1	PC.
013		251350-8	+ COUNTERSUNK HEAD SCREW M6X28	1	PC.
014		262553-9	RUBBER SLEEVE 6	1	PC.
015	2	266036-1	* PAN HEAD SCREW M5X18	3	PC.
016		285809-3	BEARING RETAINER 23-36	1	PC.
017		211251-2	BALL BEARING 6003LLB	1	PC.
018	2	324958-2	* SPINDLE	1	PC.
019		254001-2	WOODRUFF KEY 4	1	PC.
020	2	140706-9	* GEAR HOUSING COMPLETE	1	PC.
020	2	INC. 213389-9	* OIL SEAL 22	1	PC.
020	2	INC. 213306-9	* OIL SEAL 20	1	PC.
021		911228-4	PAN HEAD SCREW M5X18	2	PC.
022		421970-4	DECOMPRESSION CHAMBER	1	PC.
023		318079-0	PLATE	1	PC.
024		911228-4	PAN HEAD SCREW M5X18	2	PC.
025		256501-8	SHOULDER PIN 6	1	PC.
026		213005-3	O RING 5	1	PC.
027		911228-4	PAN HEAD SCREW M5X18	3	PC.
028		213005-3	O RING 5	1	PC.
029		253145-5	FLAT WASHER 6	1	PC.
030		233011-2	COMPRESSION SPRING 8	1	PC.
031		419589-1	CAP	1	PC.
032		419578-6	GRIP	1	PC.
033		911228-4	PAN HEAD SCREW M5X18	2	PC.
034		125346-4	HOOK ASS'Y	1	PC.

Item No	Type	Part No	Description	Qty	Unit
034		INC. 257757-6	SLEEVE 10	1	PC.
034		INC. 313135-1	JOINT	1	PC.
034		INC. 233442-5	COMPRESSION SPRING 10	1	PC.
034		INC. 951063-8	SPRING PIN 3-16	1	PC.
035		911323-0	PAN HEAD SCREW M6X16	1	PC.
036		158143-3	COVER COMPLETE	1	PC.
036		INC. 810291-3	CAUTION LABEL	1	PC.
037	2	319471-3	* BEARING BOX	1	PC.
038		213676-6	O RING 53	1	PC.
039		211104-5	BALL BEARING 6001	1	PC.
040		253744-3	FLAT WASHER 12	1	PC.
041		227504-9	HYPOID GEAR 36	1	PC.
042		240005-0	FAN 45	1	PC.
043	2	211097-6	BALL BEARING 6000LLB	1	PC.
044		681640-9	INSULATION WASHER	1	PC.
045		516981-3	ARMATURE ASS'Y 115V	1	PC.
045		INC.	Item No. 43,44,46-51	1	PC.
046		241905-7	FAN 80	1	PC.
047		285727-5	BEARING RETAINER	1	PC.
048		211251-2	BALL BEARING 6003LLB	1	PC.
049		213226-7	O RING 16	1	PC.
050		257198-6	RING 17	1	PC.
051		961077-9	RETAINING RING S-17	1	PC.
052		911258-5	PAN HEAD SCREW M5X35	4	PC.
053		419573-6	BAFFLE PLATE	1	PC.
054		911676-7	PAN HEAD SCREW M5X55	2	PC.
055		526171-0	FIELD ASS'Y 115V	1	PC.
055		INC. 684790-9	VINYL TUBE (Added)	2	PC.
055		INC. 689055-4	RING TERMINAL RETAINER 15.5 (Added)	2	PC.
055		INC. 654502-4	CONNECTOR P-2	2	PC.
055		INC. 654020-2	RING TERMINAL	2	PC.
056		163470-5	DEPTH GUIDE	1	PC.
057		941201-0	FLAT WASHER 8	1	PC.
058		264006-4	HEX. NUT M8-13	1	PC.
059		272254-1	LEVER 59	1	PC.
060		257953-6	BOW STOP RING E-12	1	PC.
061		266227-4	CAP SQUARE NECK BOLT M8X28	1	PC.
062		345725-2	ANGULAR GUIDE	1	PC.
063	2	256511-5	SHOULDER PIN 6-7	1	PC.

Item No	Type	Part No	Description	Qty	Unit
064		324699-0	STOPPER PIN	1	PC.
065		941201-0	FLAT WASHER 8	1	PC.
066		264006-4	HEX. NUT M8-13	1	PC.
067		272254-1	LEVER 59	1	PC.
068		257953-6	BOW STOP RING E-12	1	PC.
069		961017-7	STOP RING E-3	1	PC.
070		419571-0	DIAL 22	1	PC.
071		816864-0	SCALE PLATE	1	PC.
072		922903-7	HEX. SOCKET HEAD BOLT M5X50	1	PC.
073		941101-4	FLAT WASHER 5	1	PC.
074		257761-5	SLEEVE 6	1	PC.
075		266229-0	H.S.SET SCREW(CUP POINT)M5X8	1	PC.
076		318071-6	BASE	1	PC.
077		266229-0	H.S.SET SCREW(CUP POINT)M5X8	1	PC.
078		266229-0	H.S.SET SCREW(CUP POINT)M5X8	1	PC.
079	2	256511-5	SHOULDER PIN 6-7	1	PC.
080		253022-1	FLAT WASHER 8	1	PC.
081		158141-7	MOTOR HOUSING COMPLETE	1	PC.
081	INC.	263002-9	RUBBER PIN 4	1	PC.
081	INC.	643653-8	BRUSH HOLDER 6.5-13.5	2	PC.
081	INC.	266401-4	H.S.SET SCREW(FLAT POINT)M8X30	1	PC.
082		862845-2	NAME PLATE F/5377MG	1	PC.
083		643650-4	BRUSH HOLDER CAP 6.5-13.5	2	PC.
084	2	194986-9	CARBON BRUSH CB-154 2PC/SET W/ ORIGIN	1	SET
084	3	181047-4	CARBON BRUSH CB-154 2PC/SET W/ ORIGIN	1	SET
085		652014-1	PAN HEAD SCREW M4X8	1	PC.
086		188184-5	REAR COVER SET	1	PC.
086	INC.		Item No. 87	1	PC.
087		188184-5	REAR COVER SET	1	PC.
087	INC.		Item No. 86	1	PC.
088		266026-4	TAPPING SCREW BIND CT 4X12	2	PC.
089		188185-3	HANDLE SET	1	SET
089	INC.		Item No. 93	1	PC.
090		266041-8	TAPPING SCREW 5X25	4	PC.
091		265995-6	TAPPING SCREW 4X18	2	PC.
092		651189-3	SWITCH TG933TN-2	1	PC.
093		188185-3	HANDLE SET	1	SET
093	INC.		Item No. 89	1	PC.
094	2	266427-6	TAPPING SCREW 4X12	2	PC.

Item No	Type	Part No	Description	Qty	Unit
095		687673-2	STRAIN RELIEF	1	PC.
096		682564-2	CORD GUARD	1	PC.
097		551688-4	POWER SUPPLY CORD ASSEMBLY	1	PC.
097	INC.		Item No. 96	1	PC.
097	Opt	664820-2	POWER SUPPLY CORD 3P-14-2.5M, SJ	1	PC.
098		961056-7	* RETAINING RING S-16 (Added)	1	PC.
099		232247-0	* CONED DISC SPRING 16 (Added)	2	PC.
A01	2	A-94530-10	7-1/4" FRAMING BLADE, 24T 5/8" 10PC/PK	1	PK.
A02		783204-6	HEX. WRENCH 6	1	PC.
A03	2	821007X	TOOL BAG	1	PC.

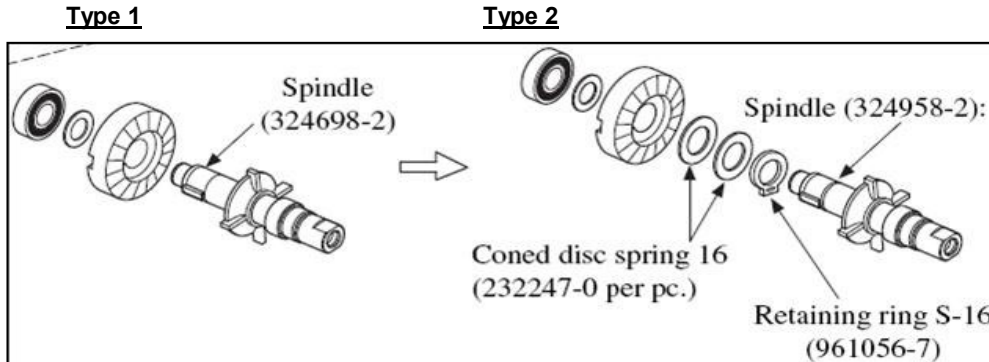
SERVICE CHANGES: 5377MG

1. Changes on Spindle

(T/I# 83065)

Item No.	Description	Type 1	Type 2
18	Spindle	324698-2	324958-2
98	Coned Disc Spring	-----	232247-0
99	Retaining Ring	-----	961056-7

Above parts are completely interchangeable as a set.

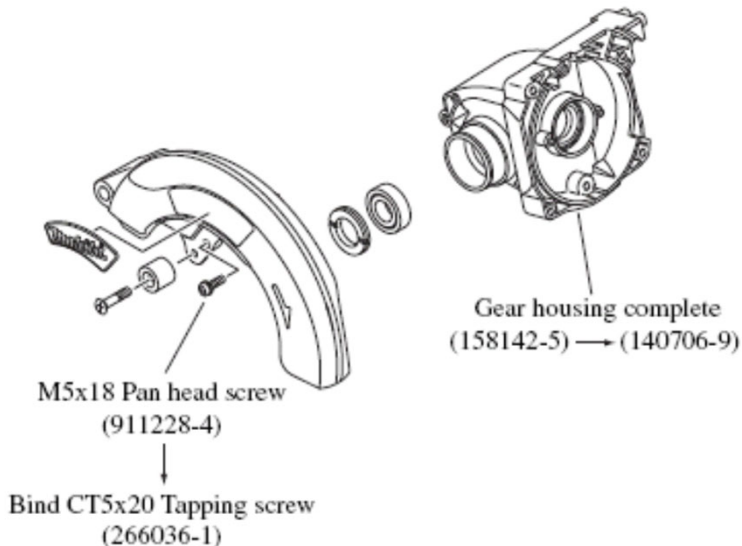


2. Changes of Gear Housing Complete, etc.

(T/I# 88586)

Item No.	Description	Type1	Type2
15	P.H.Screw M5x18	911228-4	-----
	Tapping Screw Bind CT M5x20	-----	266036-1
20	Gear Housing Com.	158142-5	140706-9

Above parts are completely interchangeable as a set.



3. Apply Makita grease N No.01 to the Depth guide (TI#C0417)

Item No.	Description	Part No.
56	Depth Guide	163470-5

Service Note:

Apply Makita grease N No.1 (042017-7A) to the sliding portions of Depth guide.

0.1g: to slide the large flat washer on Depth guide

0.1g: to slide the small flat washer on Depth guide

4. Change of Tension Spring

(T/I#A4276)

Item No.	Description	Type1	Type2
6	Tension Spring 4	231831-8	-----
	Tension Spring 5	-----	231889-7

5. Change of Bearing Box

(T/I#B4444)

Item No.	Description	Type1	Type2
37	Bearing Box	318066-9	319471-3